

Supervised Play & Recreational Play

Social Work Assistants, together with a group of trained volunteers offer play sessions while your child is waiting for outpatient appointments. Volunteers also offer recreational bedside play when your child is hospitalised.

Back-to-School Programme

Our social workers and counsellors arrange for a session with your child's class and schoolmates to explain your child's illness, the treatment your child has undergone and things the class can do to make your child's return to school easier. We also discuss with your child's teachers on ways the school can help support your child during the period of absence and how a smooth reintegration to school can be achieved.

Tuition & Befriending Programme

We have a pool of volunteer tutors who are available to coach children from low-income families. Befrienders can also be assigned to your child/children to provide social and recreational support.



Once your child is diagnosed with cancer, a social worker or counsellor will be assigned to your family. If you have not been introduced to your social worker or counsellor, please contact us at Tel: 6297 0203 / 6394 8236 / 6772 4472.



For our full range of services, programmes and initiatives available, please visit our website at:
www.ccf.org.sg

Mailing address

Orchard P O Box 0157 Singapore 912306

Main / Administration Office

138 Bukit Timah Road Singapore 229839

Tel: 6835 6465 Fax: 6835 0032

Email: admin@ccf.org.sg

CCF-KKH Family Support Centre

KK Women's & Children's Hospital

100 Bukit Timah Road, Children's Tower,

Level 7, Room 7 T 01 Singapore 229899

Tel: 6297 0203 / 6394 8236 Fax: 6297 0121

Email: kkh_fsc@ccf.org.sg

CCF-NUH Family Support Centre

National University Hospital

5 Lower Kent Ridge Road

Main Building, Level 4 Singapore 119074

Tel: 6772 4471 / 2 / 3 Fax: 6772 4470

Email: nuh_fsc@ccf.org.sg

Services to Families

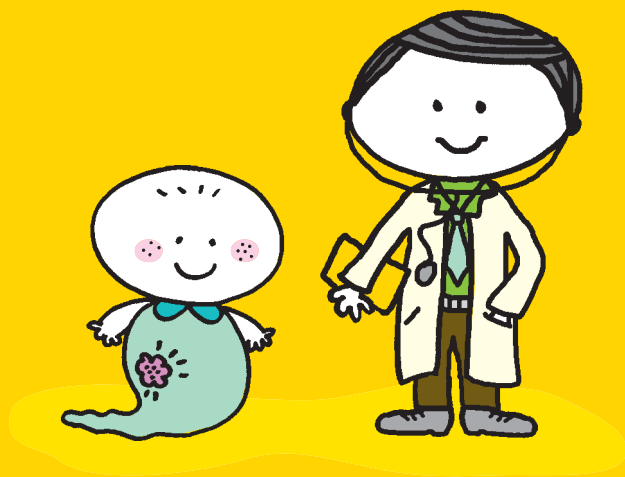


**Children's
Cancer
Foundation**

“My daughter Nurshaqinah, was diagnosed with Leukaemia at the age of seven...we thought that there was no one we could turn to in terms of moral and financial support, until we were introduced to the Children's Cancer Foundation.”

Mr Kamsani

You have just been told that your child has cancer. Most parents, like you, are in a state of shock, anger and disbelief. You are probably struggling with questions like “**Why my child?**” “**What have I done wrong?**” “**What should I do now?**”



The Children's Cancer Foundation (CCF) is here to walk with you through this uncertain and stressful time you and your family are experiencing.

Our mission is to improve the quality of life of children with cancer and their families through enhancing their emotional, social and medical well-being.

We have a team of trained social workers and counsellors dedicated to supporting the needs of your child and family. We seek to assist your family with the challenges and changes that cancer will impose on your life.

Services provided depend upon the needs of your child and family and may include counselling and assistance with issues such as the following:

- Coping with diagnosis, illness, treatment and hospitalisation
- Impact of illness on family members
- Understanding medical terms and what is involved in the treatment
- Parenting and care-giving concerns
- Family issues
- Referral to community-based resources
- Developmental, behavioral or life changes
- School or educational concerns
- Financial difficulties and referral to financial aid schemes



Emotional and Informational Support

Our team of social workers and counsellors are available to guide you as you try to understand the medical terms and information surrounding your child's illness and treatment. We also have a **resource library** at KK Women's & Children's Hospital (KKH) and National University Hospital (NUH) where you can borrow medical and psychosocial related books.

Sometimes, speaking to other parents who have gone through a similar experience can be very helpful. The Children's Cancer Foundation's **support groups** can help connect you with those parents.

The Children's Cancer Foundation also organises a variety of **educational seminars/workshops** to equip you with information and skills to help you cope with your child's illness.

Therapeutic Play

We help your child develop ways to cope with fear and anxiety. Apart from promoting emotional, social and cognitive development, we also help him/her adjust to and understand about his/her illness and health care experiences.