

## Don't Miss



### Titou dao

Toy Factory presents their pride and joy, the award-winning *Titou dao*. This colourful play, about the life of a street opera actress Madam Oon Ah Chiam, strikes a chord with its portrayal of the struggles of a traditional Chinese woman in a progressing nation. Tickets from \$42 to \$58, at Sistic. From Mar 1 to 18, at the National Library.



### The Pickle King

*The Pickle King* takes place at a hotel staffed by fun-loving employees, and catered to honeymooners. Love blossoms between the two main characters, but their relationship is threatened by a sinister guest, George Reaper, aka The Pickle King. Tickets from \$35 to \$50, at Sistic. Student discounts available. From Jan 31 to Feb 16, at the DBS Arts Centre.



### Disney On Ice: Finding Nemo

They've watched the cartoon, now they'll love the show on ice: Disney/Pixar's *Finding Nemo* is another great way for the kids to learn about friendship and family bonding. Tickets from \$15.50 to \$85.50, at Sistic. From Mar 9 to 18, at the Singapore Indoor Stadium.

## Make A Difference

The Children's Cancer Foundation (CCF) will embark on its 3rd International Childhood Cancer Day on Feb 15, and has partnered with NETS (Singapore) Pte Ltd for the "Helping Hands, Touching Hearts" programme. Simply make a minimum donation of \$7 and receive a special Combi CashCard. Although there's no cash in this card, you are entitled to free drinks and movie benefits. They aim to help raise \$20,000 outreach programmes in 2007. Call 6835 2665 for more information.

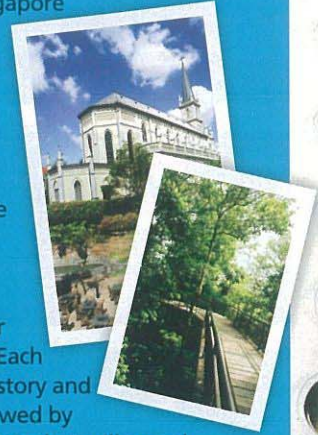


## Journeys To Self-discovery

Two books give us a chance to explore our history and support a worthy cause



➤ **KNOW YOUR HERITAGE** How has Singapore grown and developed from the early days? To find out, put on your sneakers and bring along *Discover Singapore Heritage Trails*, a handy paperback that serves as your guide to seven specially selected heritage pathways. Two focus on the Singapore River and Civic District trails; three on our main ethnic groups, Chinatown, Little India and Kampong Glam; and two on our natural heritage, Labrador Nature Reserve and Kent Ridge Park. Each begins with a brief overview of the history and cultural background of the area, followed by a list of at least 15 significant stop-points that will reveal more exciting information. Call 6538 5132 for details.



➤ **SAVE THE ENVIRONMENT** "The tree and the elephant were the best of friends; both were young and not so big. The itching elephant could scratch himself on the tree; the tree could wander with the elephant's stories!" Author and illustrator Jin Pyn shows us how connected we all are in the scheme of things with her book, *The Elephant And The Tree*. We are invited into the elephant and tree's world, where

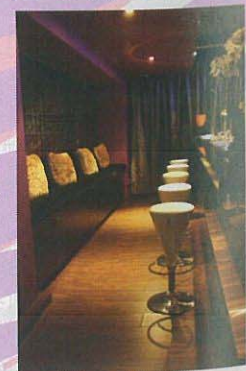
deforestation, exploitation and poor living conditions become very real issues. It encourages us to do our part in conserving the environment and taking care of wildlife. Kids will enjoy reading the book and looking at the beautifully crafted black and white pages. Visit [www.elephantandtree.com](http://www.elephantandtree.com) for more information.



## Crazy For Karaoke

Relax and sing to your heart's content at this new, high-tech lounge

Do you enjoy singing, but have never found the time and place to do so? Then gather your fun-loving friends and head for Rain, a stylish new karaoke pub. It has state-of-the-art touch screen software that allows you to select songs digitally and also features a mod bar counter, eight living rooms, two private rooms, a well-stocked bar and a pool table! You can even surf the internet and check your e-mail while waiting for your turn to sing. Don't worry if you're too embarrassed to face a crowd – heavy drapes offer you the privacy and courage to belt out your favourite tunes. It's a loud and fun way to enjoy each other's company. Rain is at UE Square. Call 6225 4782 for more information.



WWW | Get It  
WWW | Find It  
WWW | See It  
WWW | Do It  
WWW | Try It